



Meet Float.

The Wifi-connected hydrometer that helps you brew better beers.
Easy.



What is Float?

Float tracks your fermentation activity, temperature and SG to brew better beers.

This device can be used in your fermenter. With its food grade housing, WiFi connection and an easy to charge battery, brewers use the Float for measuring fermentation activity and temperature.

The measurement data provides a lot of useful information. It shows you when the fermentation process has stalled so you know it is time to keg your beer. Also, you can use the temperature data collected by the Float to monitor your dry hopping temperature, and make any adjustments when needed.

Next to real time data, Float's data can be used to check historical data from older brews in order to re-produce these.

Float can assist you by giving you data about your active brew, **anytime, anywhere.**



Food grade
housing



Wifi connected

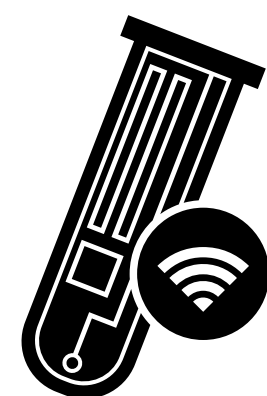
How does it work?

Using Float is **super-easy** in every way. Not only easy to use, but also **easy to install**.

1. Unpack your Float.
2. Connect it easily to your WiFi access point by using a smartphone.
3. Register your Float through the pop-up screen on your phone.
4. Drop it into your brew and start measuring!
5. Keep track of your data in the My Brewbrain online platform.

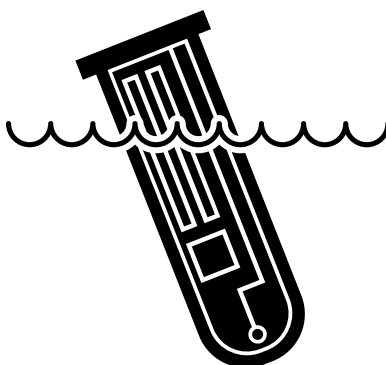


Our top-features



WiFi connected

Float easily connects to your WiFi-network and stores all SG and temperature data in your free My Brewbrain account.



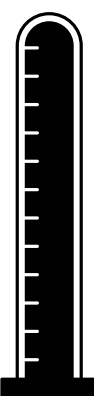
Track temperature

Check the actual temperature from the inside of your fermenting brew. Act when needed, and improve your quality.



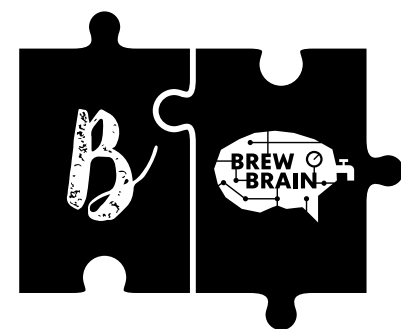
Track fermentation

Follow the trend of your active fermentation and temperature. Everywhere, mobile or desktop.



Track specific gravity

Measure SG to get an estimate of the Alcohol percentage (ABV) in your brew.



Third-party connection

Integrate with multiple platforms. Show your data in apps from *Brewfather* and *Grainfather*.



Produced in The Netherlands

Quality is our main focus. We believe in producing sustainably and offering dedicated support.

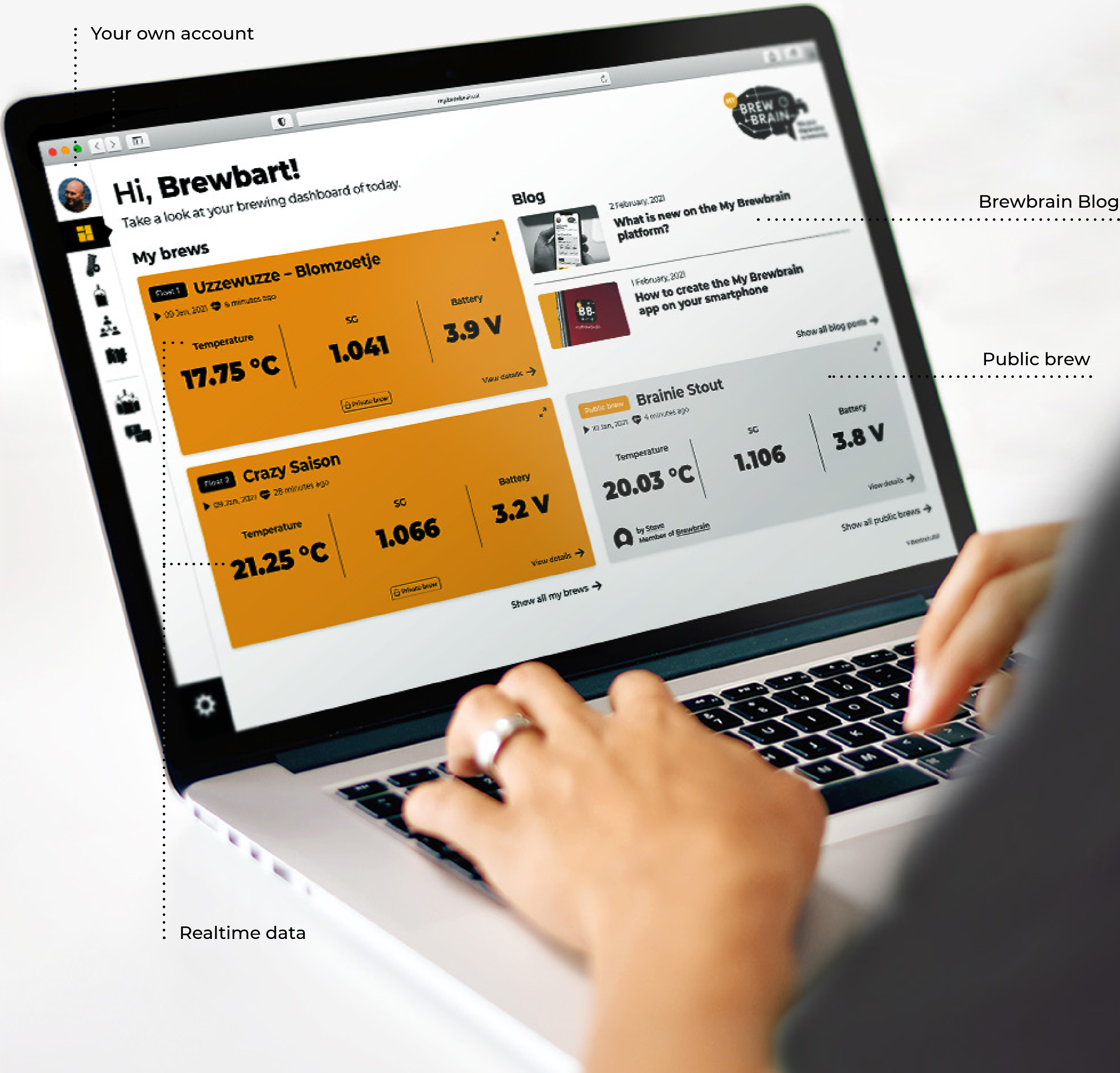
MyBrewbrain

Your own account with
(realtime) data of your
present and past brews.
For free.

After you unpack your Float, connect it easily with your WiFi acces point. Create a new account at **My Brewbrain** or sign in. Switch to measure and drop it into your brew to start measuring!

All your data will be presented in the online platform. Full-screen data for your brewery or an overview of your brews, everything has an responsive design for every screen. You can create your own groups for viewing data or make your brews public to discuss them with other brewers.

New features will be developed by the Brewbrain team together with the input from our users.



Support

Unlimited support. Get the best out of your product.

We aim to give the brewer the best experience once you bought our product. Do you have an issue or a question? Let us know!



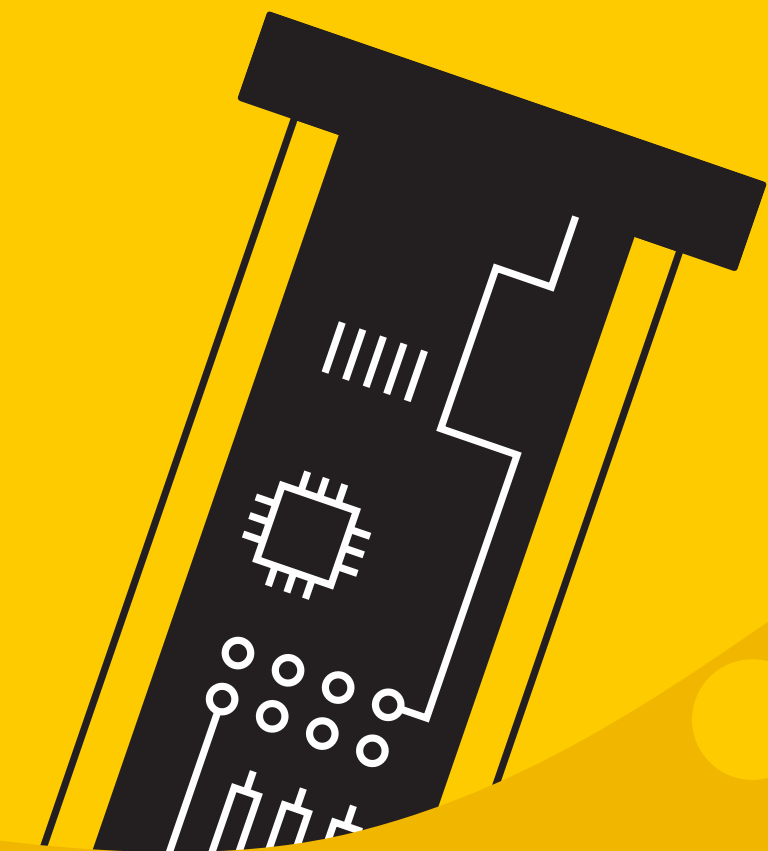
Interested?

Let's get in touch.

General: info@brewbrain.nl

Sales: sales@brewbrain.nl

Phone: +31 (0)850 470 852



brewbrain.com