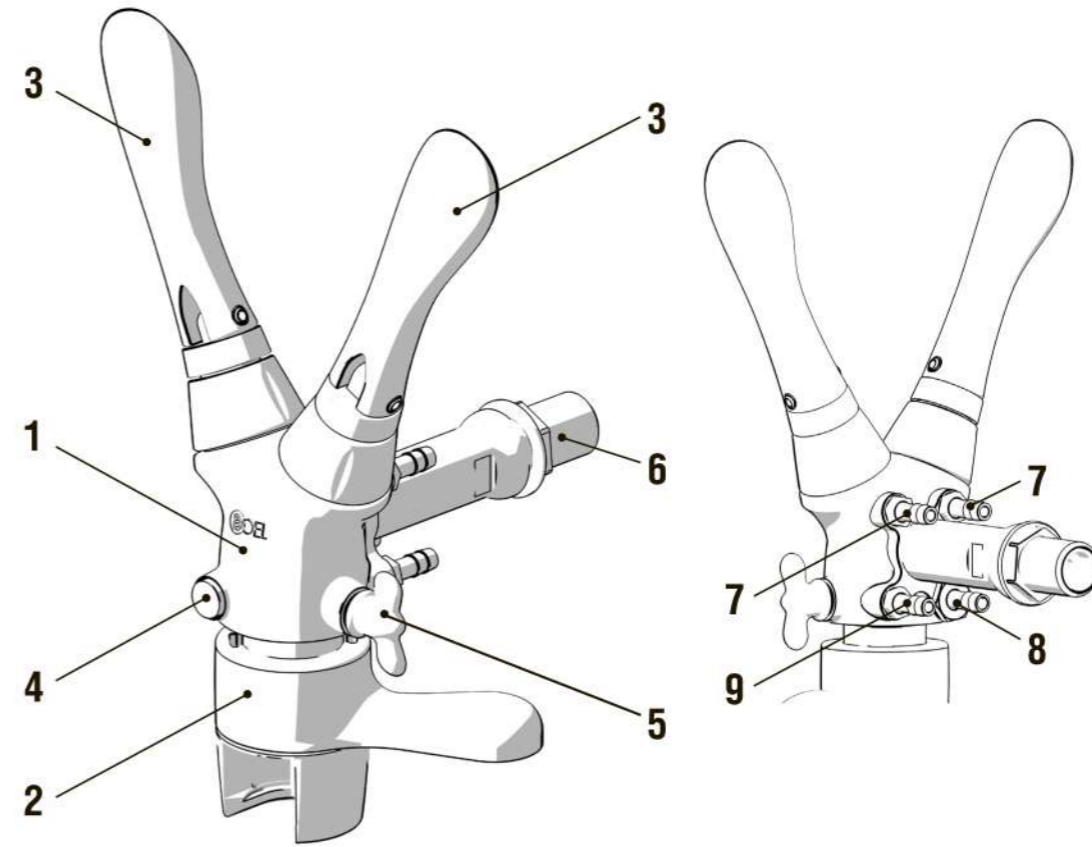




TECHNOLOGIES

The User Manual for the non-foaming dispensing device iTAP-2

1 itap 2 Appearance

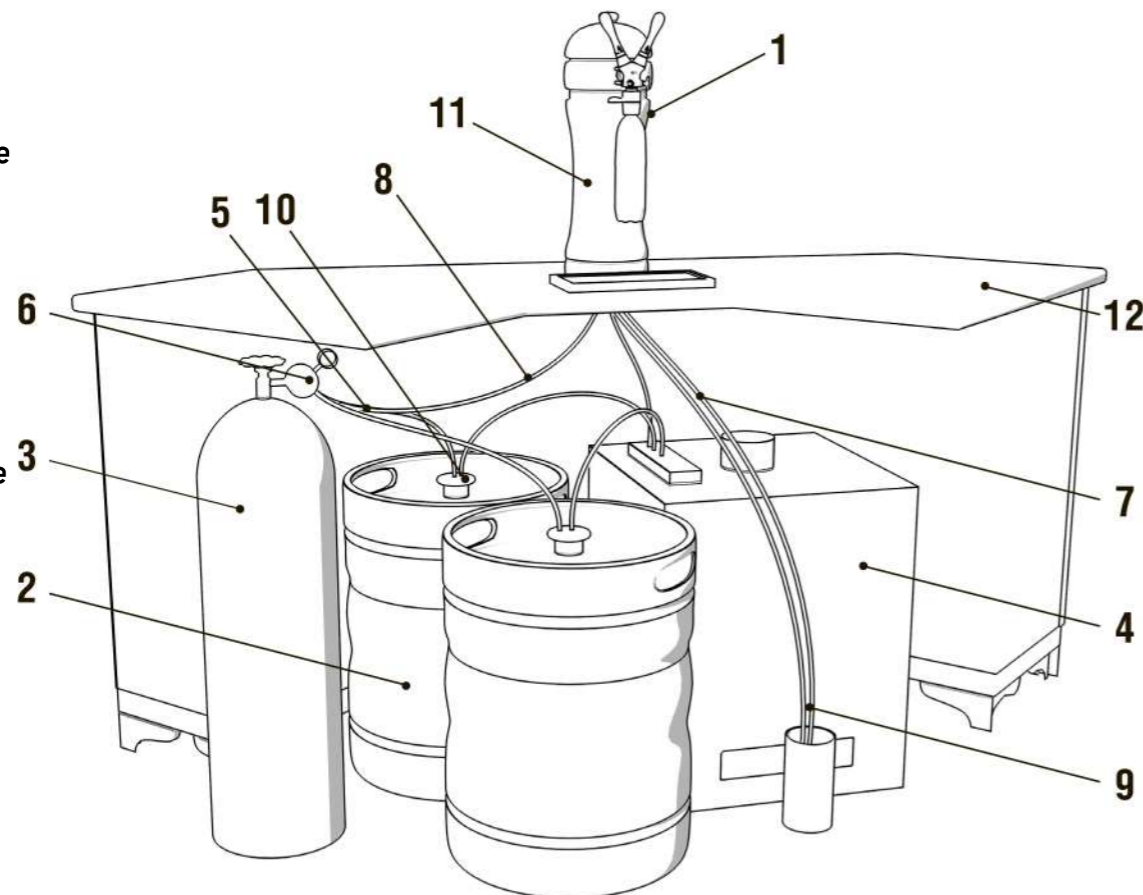


- 1 - Body
- 2 - Clamp-lock
- 3 - Handle for beverage serving
- 4 - CO2 feed button
- 5 - Throttle knob
- 6 - Fitting 5/8" BSP
- * In the model iTAP-2 Fitting 5/8 " BSP i used as a fixing pipe
- 7 - Drink supply nipple
- 8 - CO2 supply nipple
- 9 - Drain nipple

iTap filling device is designed for rapid filling of foaming beverages from pressure vessels into plastic bottles with neck of PCO 1810/1881 or BPF standards.

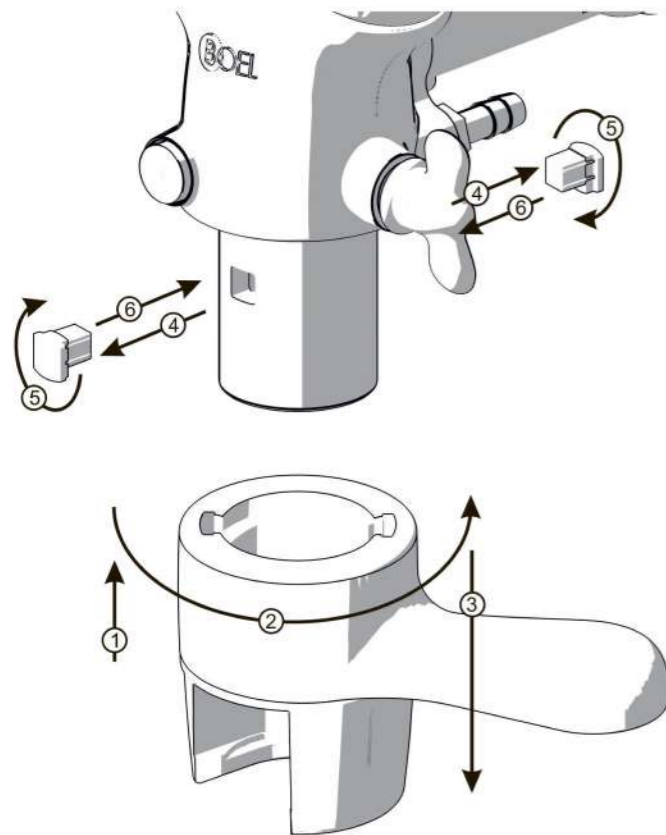
2 Connection diagram of the itap 2 device

- 1 - iTap Device
- 2 - Keg with the beverage
- 3 - CO2 Cylinder
- 4 - Beverage Cooler
- 5 - Tee connector
- 6 - CO2 regulator
- 7 - Beverage supply hose
- 8 - CO2 supply hose
- 9 - Drain hose
- 10 - Dispensing coupler
- 11 - Beverage Font
- 12 - Bar desk



3 Sequence of actions for dispensing

Inserting the bottle and filling it with CO2 gas	Filling the bottle with a drink	The end of filling	Removing the bottle
<ol style="list-style-type: none"> 1 Install the neck of the plastic bottle in the socket clock-lock. 2 Turn the clamp-lock clockwise, for tight clamping of the neck of the bottle to the housing. 3 Press the button to fill the bottle with CO2 gas. 	<ol style="list-style-type: none"> 1 Tilt the handle 90 degrees to open the beverage valve. 2 Turn the throttle knob counterclockwise. The filling of the bottle with a drink will begin. Adjust the filling speed of the bottle by turning the throttle knob. 	<ol style="list-style-type: none"> 1 After filling the bottle, rotate the handle 90 degrees back to take the vertical position. 2 Fully open the throttle to equalize pressure inside the bottle with atmospheric by turning the throttle knob counterclockwise. 	<ol style="list-style-type: none"> 1 Close the throttle by turning its knob clockwise to the end. 2 Turn the spoon counterclockwise until it stops, in order to squeeze the bottle neck from the body. 3 Remove the bottle.



If necessary, the filling device has a clamping mechanism adjustment of the bottle neck from the standard.

For this:

- ① Move the clock-lock body vertically upward until it stops.
- ② Turn counterclockwise until it stops.
- ③ Remove by moving down, as shown in the figure.
Remove the end-stop part.
- ④ Flip the end-stop part. Insert the end-stop part into place.
- ⑤ Install clamp-lock body in a starting position
- ⑥ (installation clamp-lock body opposite of removal)

* End-stop part can be installed as from the front, as from the back of the iTAP body.

To service of the device allowed employees who have studied this manual and passed safety instructions how to work with the equipment for beverages bottling.

Kind of processing	Periodicity	Means for processing	Time (min.)	t (°C)	Source of working solution
Cleaning	Once a day	Water	10	60	City water supply
Rinsing	(at the end of the day)	Water	15	20	City water supply
Disinfection	1 time per week	Neomoscan Sepa, Divo Cip or a similar liquid used for food equipment disinfection	10-15	60	Cleaning kegs
Rinsing	After Disinfection	Water	10	40-60	City water supply
Rinsing		Water	15	20	City water supply

Technology of washing itap device.

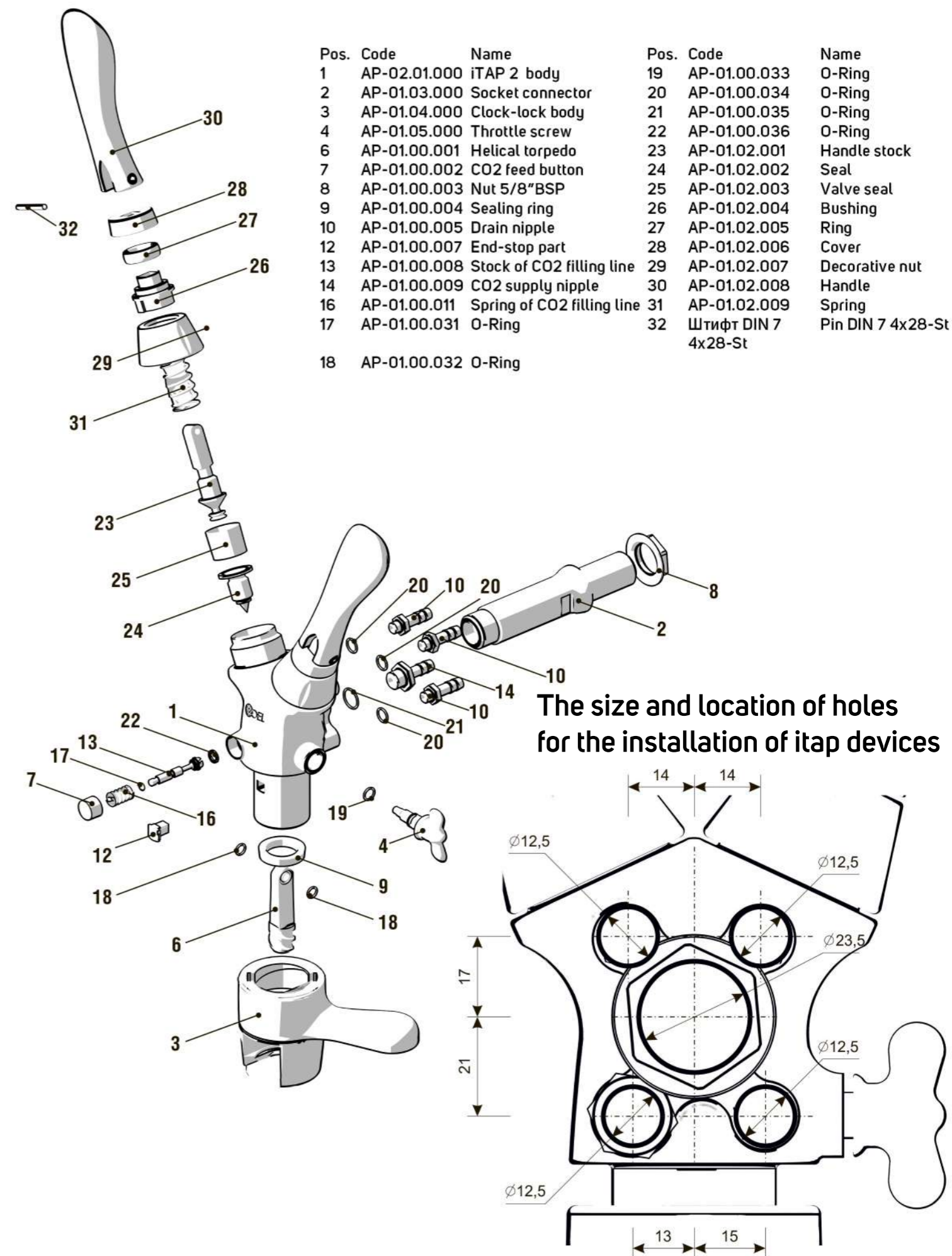
Daily, according to the Sanitary rules for the brewing and non-alcoholic industry, the dispensing device must be washed for 30 minutes with hot (60°C) and cold water.

Weekly, you need to disinfect the device with antiseptics (Antiforminum, Calcium hypochlorite) and then rinse thoroughly with water to remove disinfectant.

Precautionary measures

To ensure the smooth operation of the device, it is necessary to observe some rules of work with it:

- The packaging used must comply with sanitary and hygienic requirements for food packaging.
- Containers must be clean and free from visible defects.
- The device must be serviced regularly.
- Do not set the unit to a higher pressure 0,4 MPa. = 4,0 Bar = 58,02psi
- The o-ring pos. 17 and 19 need to smear food grade silicone grease



The size and location of holes for the installation of itap devices